

Brihan Mumbai Ganit Adhyapak Mandal**Mathematics Quiz Contest
Only Question**

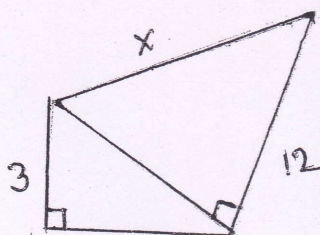
2006-2007

1.

The addition of the digit of 2 digit number is 10. If 54 is added to the number, its digits are reversed. Find the number.

2.

Find the value of "X"?



3.

The angles of the quadrilateral are in the ratio 1 : 2 : 3 : 4. Find the biggest angle.

4.

Expand $(2x - \frac{1}{x})^2 = ?$

5.

Four bells ring at an interval of 6, 8, 12 and 18 secs. Respectively. All the bells ring simultaneously at 12 O'clock. At what time will they ring again ?

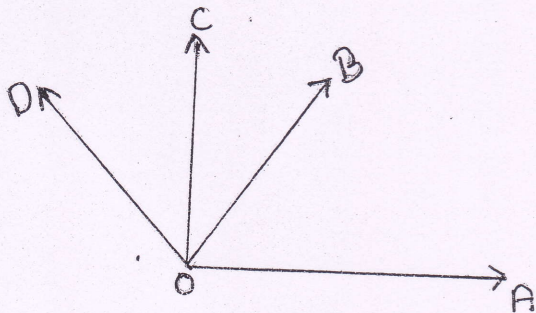
6.

By Some rule, natural numbers are written as 1, 3, 6, 10..... can you write the 19th number in this sequence ?

7.

The Sum of two numbers is 108. G.C.D. of those number is 12. How many such pairs are possible ?

OA, OD, OC are the rays, Ray OB is the angle bisector of $\angle AOD$. If $\angle AOB = 60^\circ$, $\angle DOC = 40^\circ$ then $\angle BOC = ?$



2010

355 is divisible by 15, then find the smallest digit at ★ place

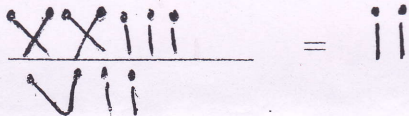
is the speed Km / hr if 15.3 km distance is covered in 4h. 15 min ?

11.

Find the value of

$$\frac{1}{3 + \frac{1}{2 + \frac{1}{2}}}$$

12.



Change the position of any one matchstick and Write the perfect equation.

13.

Evaluate -

$$\frac{2^4 \times 81 \times 25}{3^3 \times 5^2}$$

14.

How many two digit numbers contain digit 8 once only ?

15.

Rs. 7,800 becomes Rs. 11,544 in 6 Years by simple interest. Find the amount at the end of 2 years.

16.

Ishan sold an article at 20% profit. If he would have sold it at 30% profit, he would have earned Rs. 50 more. Find the cost price of the article.

17.

Find the square root of 14641.

18.

If 8 labours take 18 days to complete one task, how many days will 12 labour take to complete the same task ?

19.

The Sum of 2 numbers is 12 and their product is 32. Find the sum of their reciprocal.

20.

$$\sqrt{(0.036 \times 0.16 \times 0.025) / (49 \times 0.0064 \times 0.0004)} = ?$$

21.

Write following number in figures - Eighteen million and sixty

22.

If $(3\Delta 5) = 4$; $(9\Delta 5) = 7$ then find the value of $(17\Delta 1) \Delta 25$

23.

Letter M, A, T, H, S, denote positive real numbers such that $M \times A = 12$;
 $T \times H = 30$; $A \times H = 24$; $A \times T = 20$; $H \times S = 42$ then find the Value if MATHS.

24.

A Collection of sheep and chickens have a total of 91 heads and legs among them. There are twice as many sheeps as chickens. How many chickens are there ?

25.

$\overline{\text{VCM}} = ?$ write the number in international numeral

26.

What will be the remainder when 20000000008 is divided by 3 ?

27.

An equilateral triangle and square have equal perimeter. What should be the maximum length of side of the triangle and the square if both lengths are greater than 20 and less than 50.